

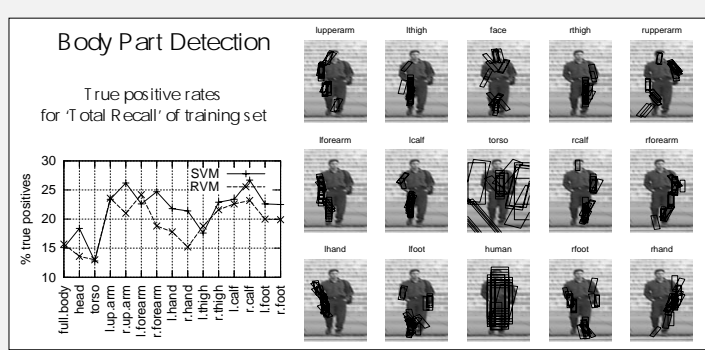
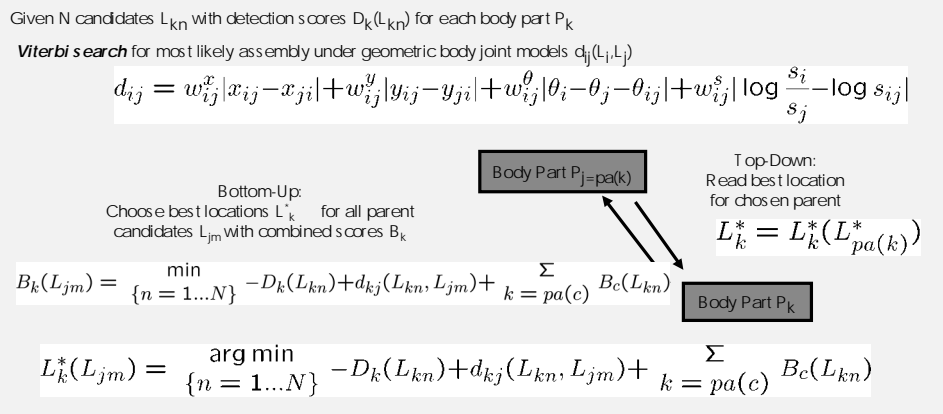
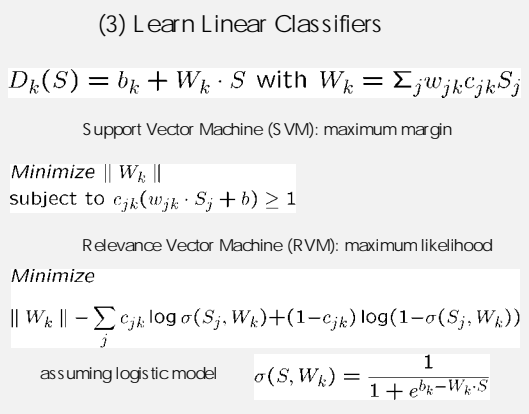
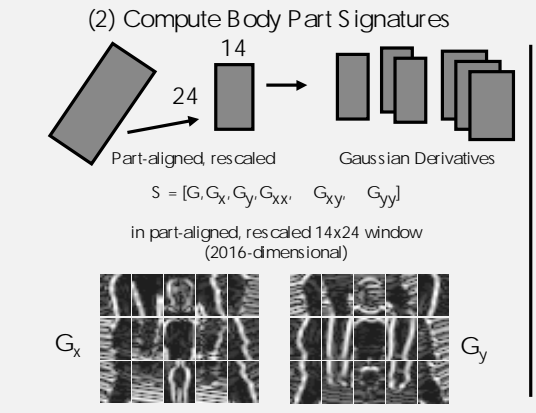
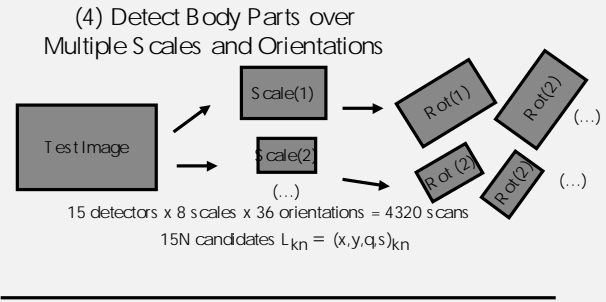
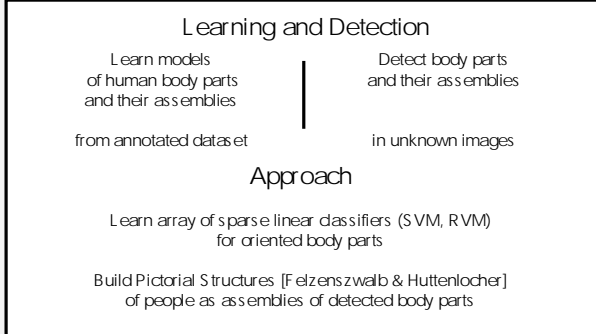
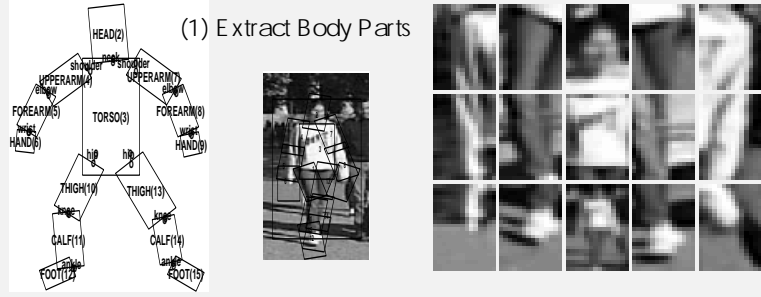


# Learning to Parse Pictures of People

Remi Ronfard Cordelia Schmid William Triggs



INRIA Rhône-Alpes



Experimental Results

3 annotated sets A, B, C from MIT pedestrian databases

3x100 images (64x128)

3x1500 positive examples (14x24)

3x500 negative examples (14x24)

Learned 4 models from datasets A and B, tested on C

SVM, RVM from training set A

SVM, RVM from training set AUB

